

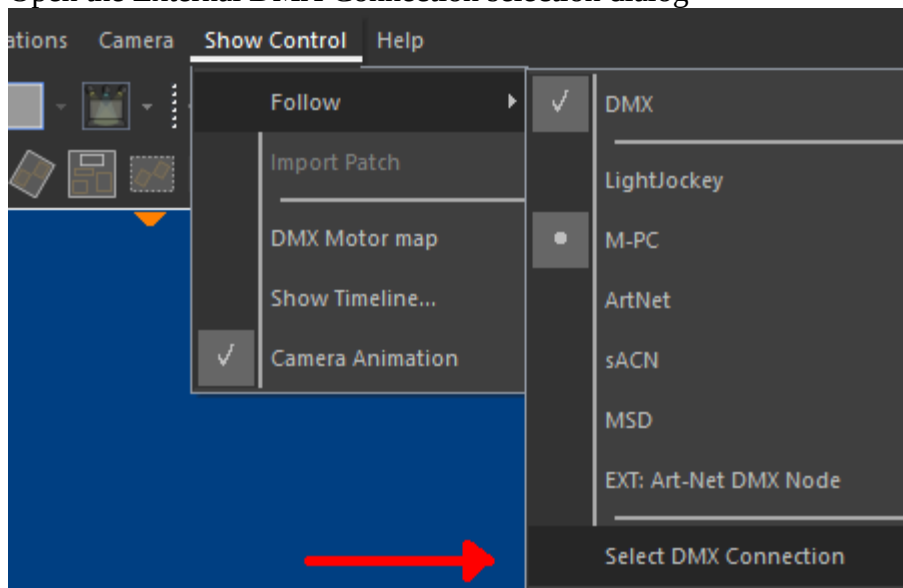
How to connect MSD to HOG

MSD requires a piece of software from HOG to be able to receive DMX values from a HOG console. This software is called the 'Visualizer Connectivity Driver'. This can be downloaded from the HOG web-site (www.highend.com).

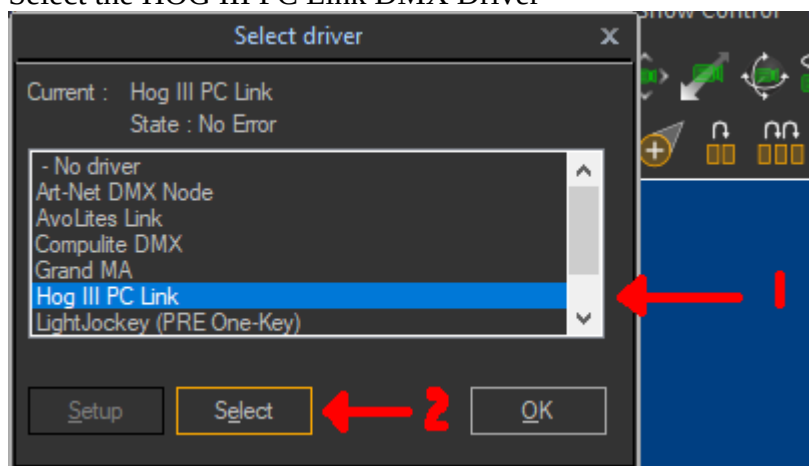
Also make sure that the 'HOG III PC Link' is installed as a DMX Connection in MSD.

Steps to take on the MSD Visualizer

- Start the Visualizer
- Open the External DMX Connection selection dialog



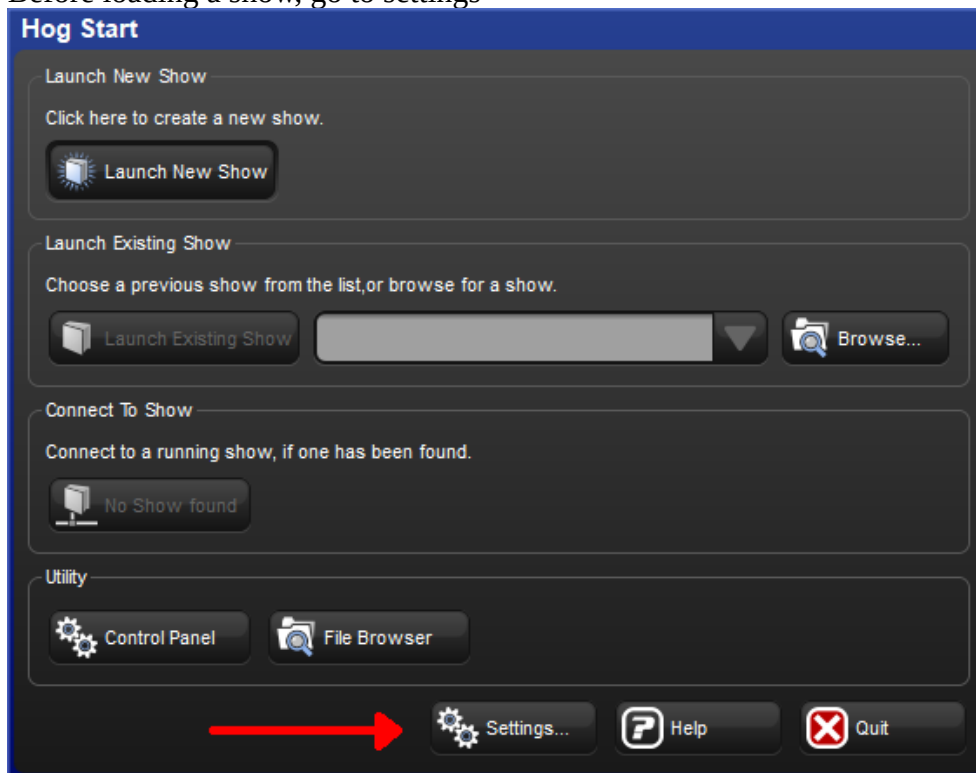
- Select the HOG III PC Link DMX Driver



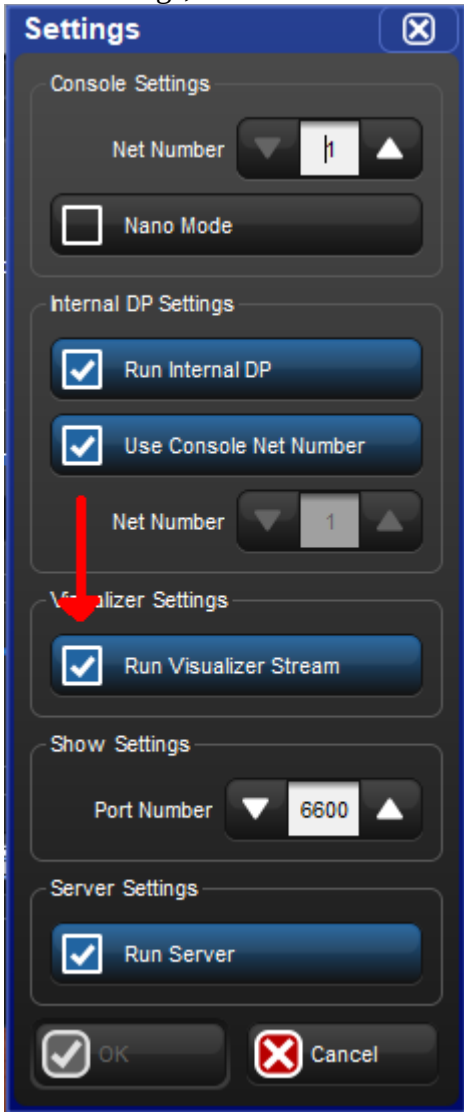
- If you are going to setup the HOG next, then keep the Visualizer running.

Steps to take on the HOG

- Start the HOG
- Before loading a show, go to settings



- In the settings, make sure the Visualizer Stream is turned on

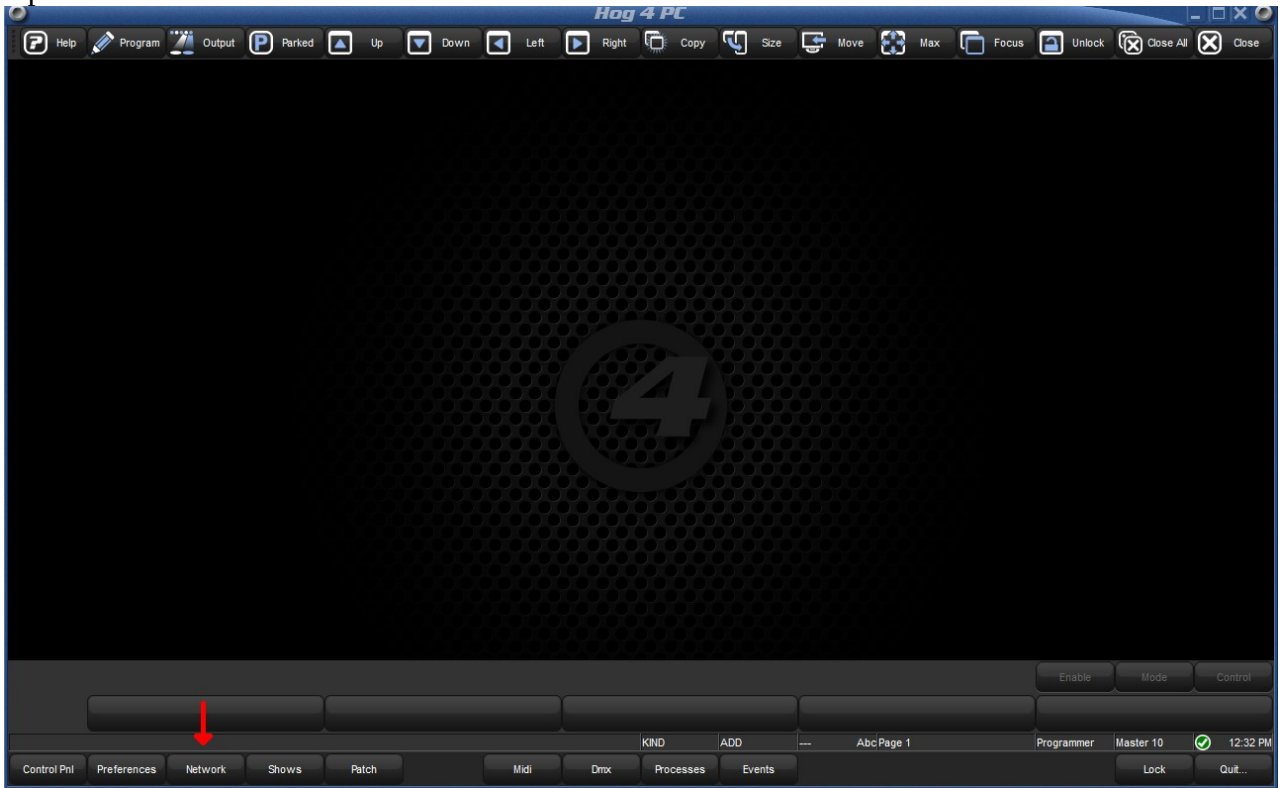


- Close the settings
- Load the show

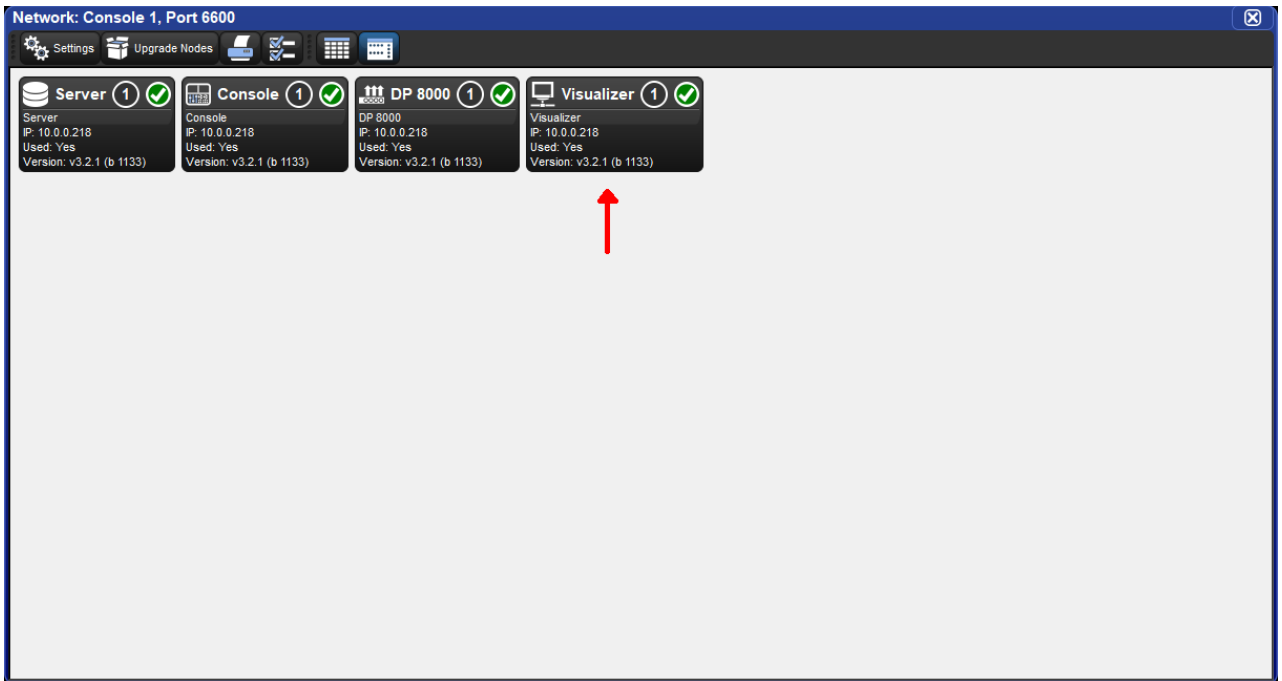
- Click on 'Setup'



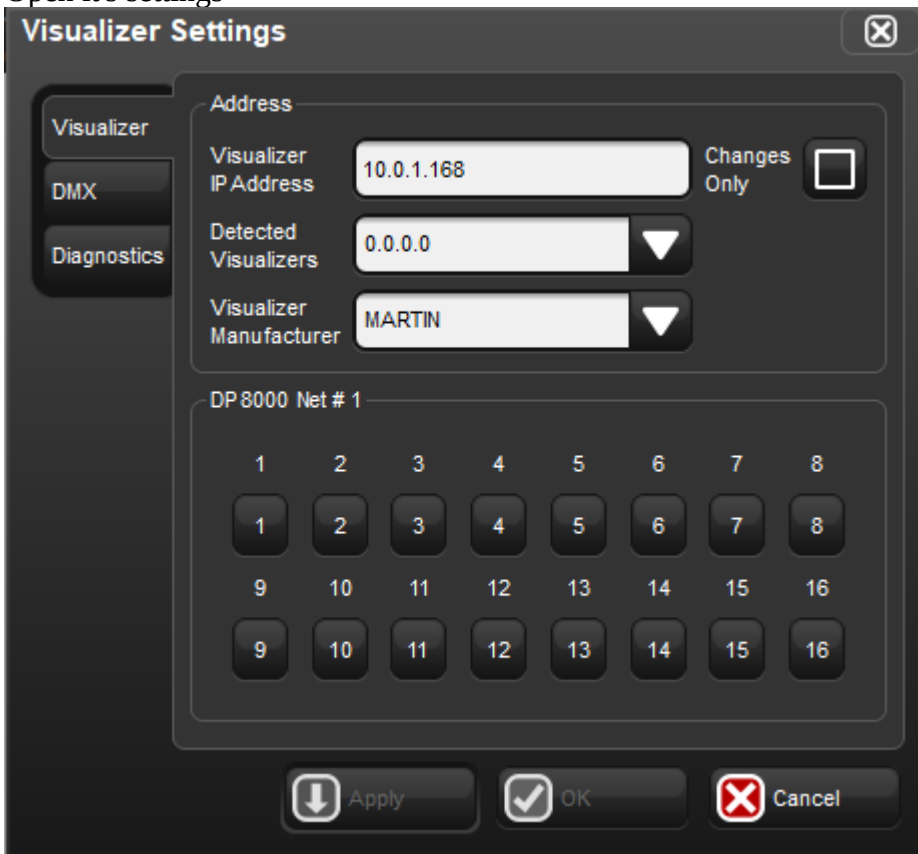
- Open the network overview



- Select the Visualizer node



- Open its settings



- Select the correct IP address of the computer that is running MSD Visualizer. If the visualizer is already running and has the HOG DMX driver selected, then it should appear in the list of found visualizers

- Select Martin as Visualizer stream.

Before you do the steps on the HOG, it is probably best to have the Visualizer setup to receive its DMX from HOG and have it running so it will turn up in the list on the HOG.