

Managing an MSD license on a Martin One-Key

To update a license on your Martin One-Key (which is a Wibu CodeMeter key), you need to create a *License Request* file (.WibuCmRaC) with the content of your key (we also refer sometimes to such a file as a Context File), and e-mail that file to us at support@lighthouse.nl.

We can use that License Request file to create a *License Update* file (.WibuCmRaU) which you can then use to update your key (put the new license on the Martin One-Key).

If a recent version of MSD is installed, you can do this using the **MSD Manage License** tool. If you have the tool, go to **Section 1A** if you want to create a License Request file, or to **Section 1B** to use a License Update file to update the license on your key.

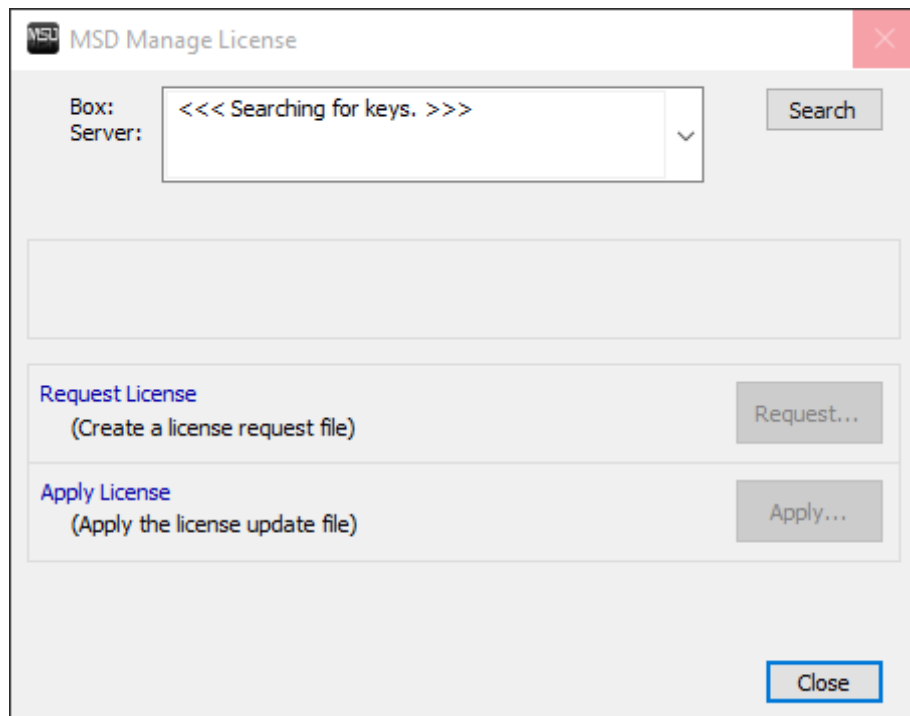
If you have an older version of MSD which does not have the MSD Manage License tool (and you do not want to install the latest version of MSD now) or if you do not have MSD installed at all, you can continue to **Section 2** for an alternative procedure, where you can create a License Request file in **Section 2A** or go to **Section 2B** to use a License Update file to update the license on your key.

Section 1A – Creating a License Request file (.WibuCmRaC).

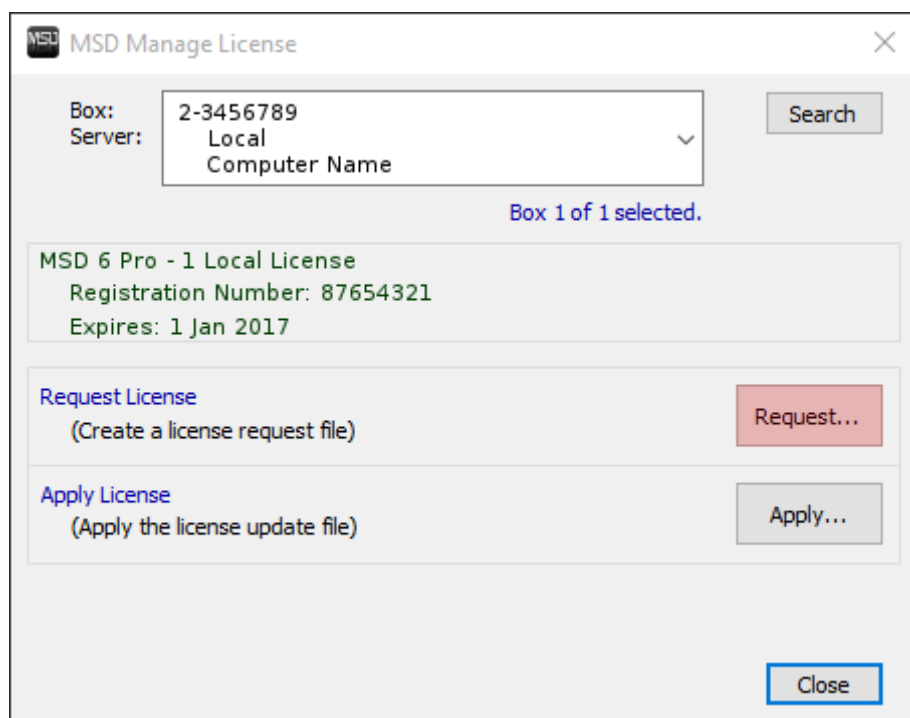
Please start the MSD Manage License tool.

(It is located in the '*Martin ShowDesigner 6 Pro*' or '*Martin ShowDesigner 6 Lite*' program group in the Start Menu.)

You will get something like this:



When the program opens it will start to scan for Martin One-Keys and will read the licenses on the keys it finds. This scanning can take a while to complete, so please wait until it is finished. When the scan is completed you will get something like this:



In this window you can access all the keys that were found during the scan.

You will get information on the currently selected key, and how many keys (boxes) it has found.

The information for a key consists of 3 lines, the box number of the key ('2-3456789' in the example), the location of the key (Local or the IP address) and the name of the computer where it is attached.

Below the selection box with the key information you will find a block with information about the MSD license on the key (if any), the registration number of the MSD package and the license usage period for which the license is valid.

You can use the '**Search**' button to repeat the scan for Martin One-Keys if needed.

Please make sure that the correct key is selected (The key for which you want to create a License Request file), and press the '**Request...**' button to generate the file, and then save it.

You will get some feedback on the success of creating the file, and where it is saved.

Please send the License Request file to support@lighthouse.nl with detailed information on why you are sending us the file (like name, contract number and/or order number for easy reference).

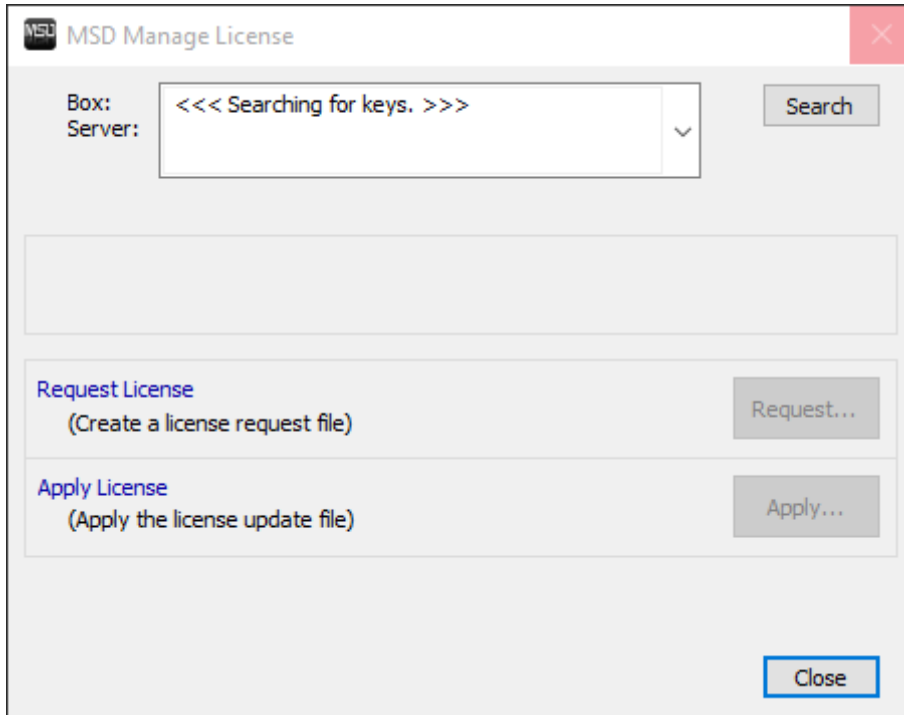
-----END-----

Section 1B – Applying a License Update file (.WibuCmRaU).

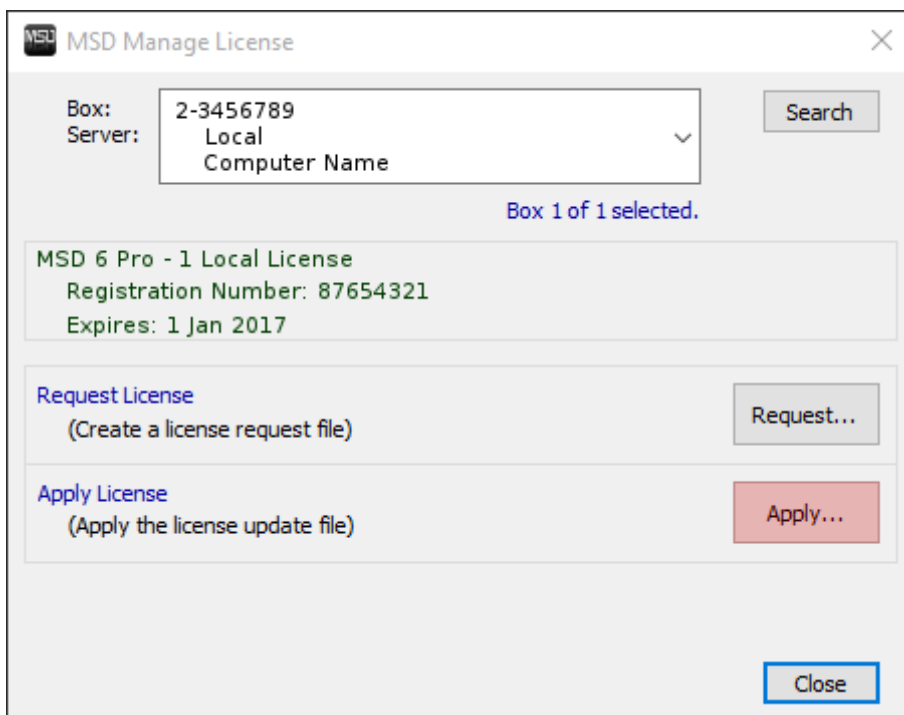
Please start the MSD Manage License tool.

(It is located in the '*Martin ShowDesigner 6 Pro*' or '*Martin ShowDesigner 6 Lite*' program group in the Start Menu.)

You will get something like this:



When the program opens it will start to scan for Martin One-Keys and will read the licenses on the keys it finds. This scanning can take a while to complete, so please wait until it is finished. When the scan is completed you will get something like this:



In this window you can access all the keys that were found during the scan.

You will get information on the currently selected key, and how many keys (boxes) it has found.

The information for a key consists of 3 lines, the box number of the key ('2-3456789' in the example), the location of the key (Local or the IP address) and the name of the computer where it is attached.

Below the selection box with the key information you will find a block with information about the MSD license on the key (if any), the registration number of the MSD package and the license usage period for which the license is valid.

You can use the '**Search**' button to repeat the scan for Martin One-Keys if needed.

Please make sure that the correct key is selected (The key for which you want to apply the License Update file), and press the '**Apply...**' button to open a file dialog, where you can select the License Update file, and apply it.

You will get some feedback on the success of applying the file.

(If you do get an error, please send an email to support@lighthouse.nl with the exact error message you get, and any additional information that you can give us like name, contract number and/or order number for easy reference.)

If the process was successful, you can close the MSD Manage License tool and start using Martin ShowDesigner.

-----END-----

Section 2 – Managing an MSD license using CodeMeter Control Center.

You can create a License Request file (.WibuCmRaC) or apply a License Update file (.WibuCmRaU) using the CodeMeter Control Center.

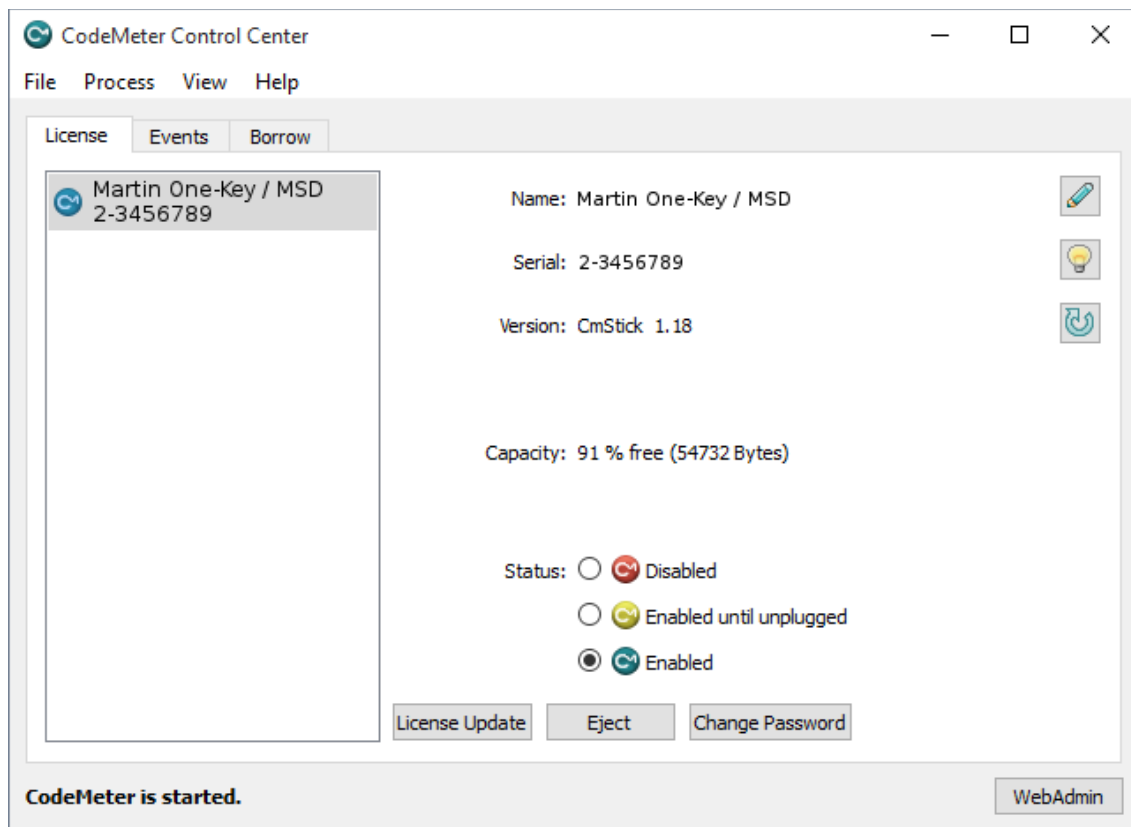
Required software

You will need to make sure that CodeMeter Control Center is installed on your computer. If you already use the Martin One-Key, then the CodeMeter Control Center probably is installed, otherwise you can download the latest version of the software from Wibu (the manufacturer of the key) using this link : http://wibu.com/download_user.php?lang=en

From the web page you need to download and install the CodeMeter Runtime.

CodeMeter Control Center

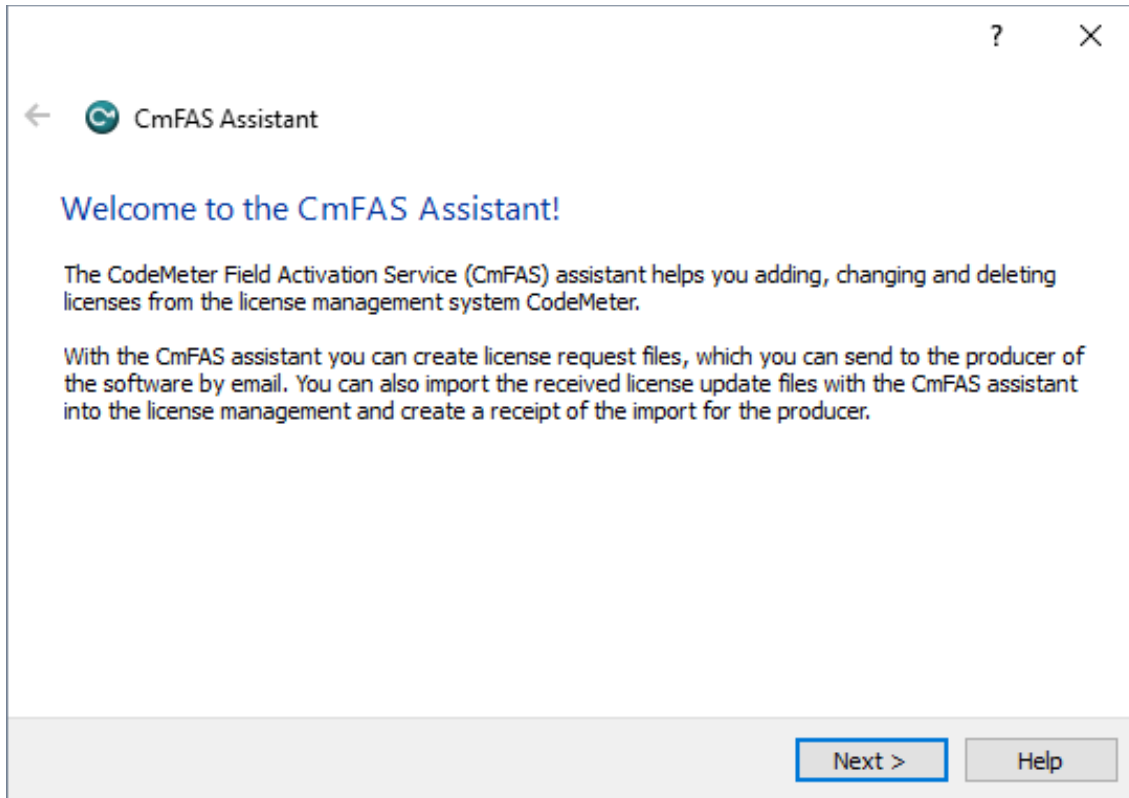
Make sure your key is connected to the PC and open the CodeMeter Control Center which should look something like:



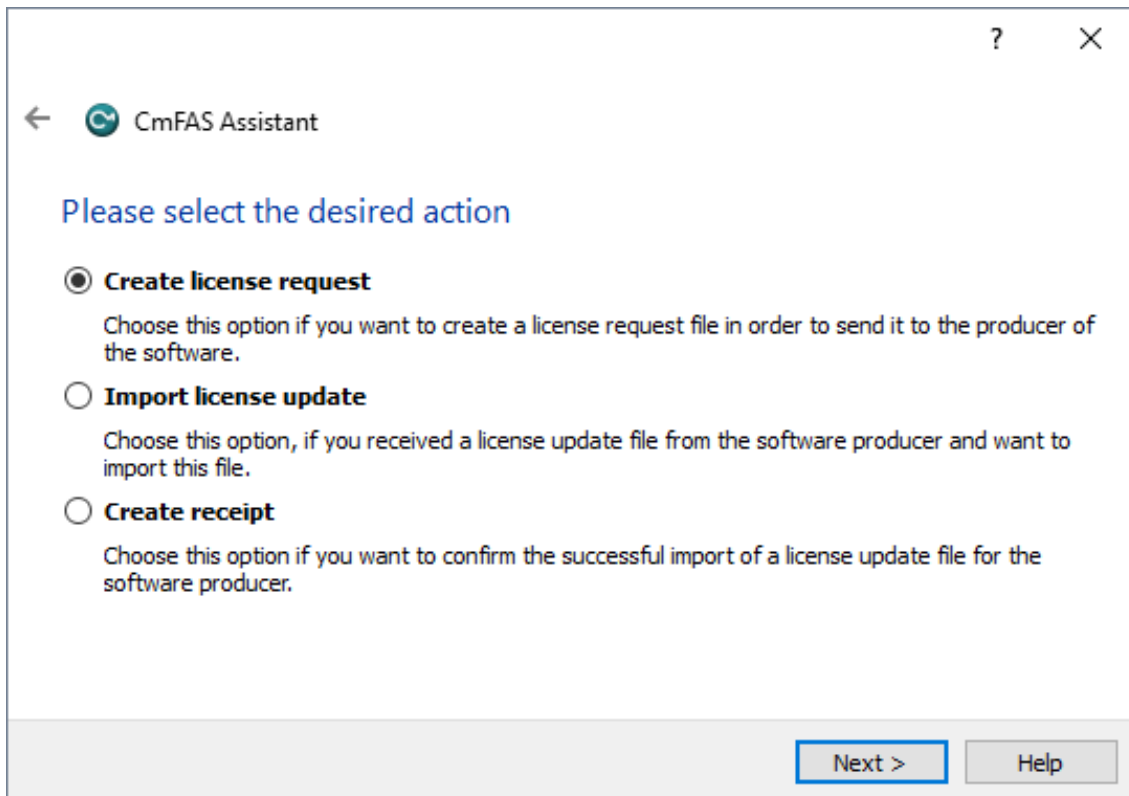
Now go to **Section 2A** if you want to create a License Request file, or to **Section 2B** to use a License Update file to update the license on your key.

2A. Creating a License Request file (.WibuCmRaC).

Click on the '**License Update**' button to create a *License Request* file (.WibuCmRaC). This should start a wizard that will guide you through the process and should look something like the following images.



Click on **Next**.



Select '**Create license request**' and click on **Next**.

The screenshot shows a window titled "CmFAS Assistant" with a back arrow and a help icon. The main heading is "Please choose an option for the license request". There are two radio button options: "Extend existing license" and "Add license of a new producer". The second option is selected. Below the options are two buttons: "Next >" and "Help".

← CmFAS Assistant

?

×

Please choose an option for the license request

Extend existing license
Choose this option if you want to change an existing license or to add new licenses to an existing license of the same producer.

Add license of a new producer
Choose this option if you want to add a new license and there are no licenses from this producer in the selected license container.

Next > Help

Select '**Add license of a new producer**' and click on **Next**.

The screenshot shows a window titled "CmFAS Assistant" with a back arrow and a help icon. The main heading is "Please enter the FirmCode". Below the heading is a text input field containing the value "100892". Below the input field is the instruction "Please enter the FirmCode which the producer told you.". At the bottom are two buttons: "Next >" and "Help".

← CmFAS Assistant

?

×

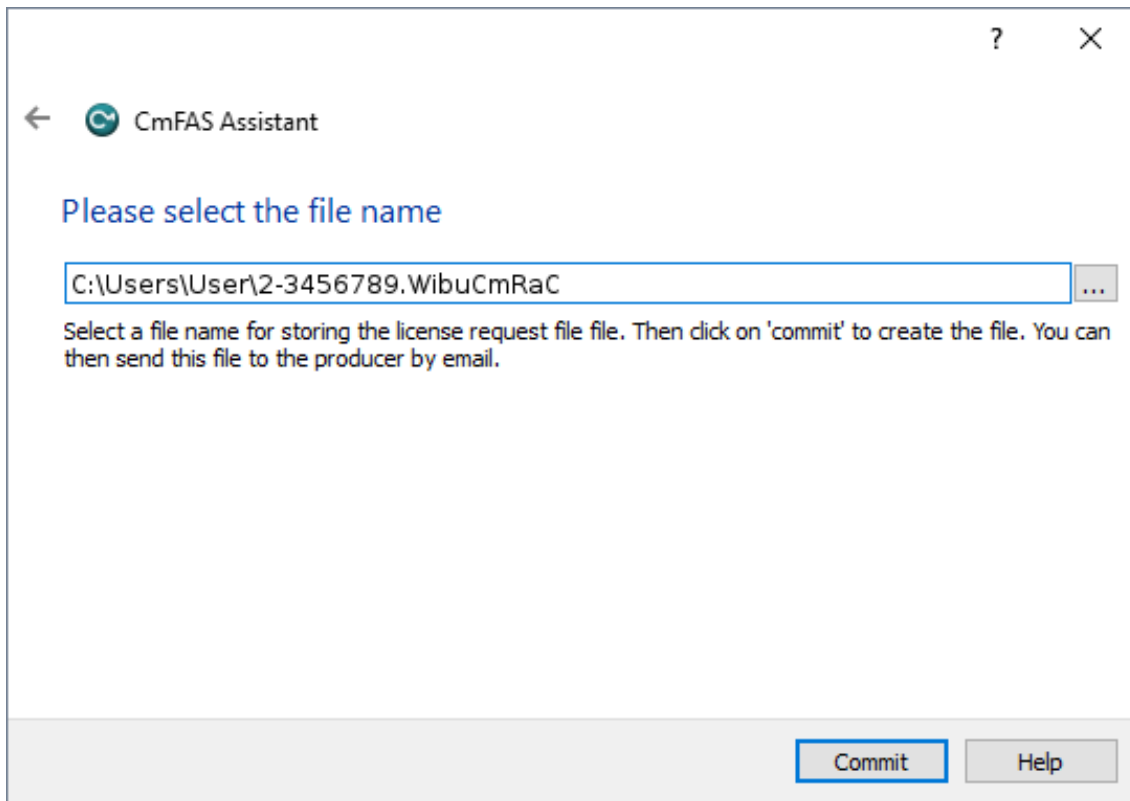
Please enter the FirmCode

100892

Please enter the FirmCode which the producer told you.

Next > Help

Enter **100892** as FirmCode (for Lighthouse Holland bv.) and click on **Next**.



Select a location to store the file and click on **Commit**.

Please send the License Request file to support@lighthouse.nl with detailed information on why you are sending us the file (like name, contract number and/or order number for easy reference).

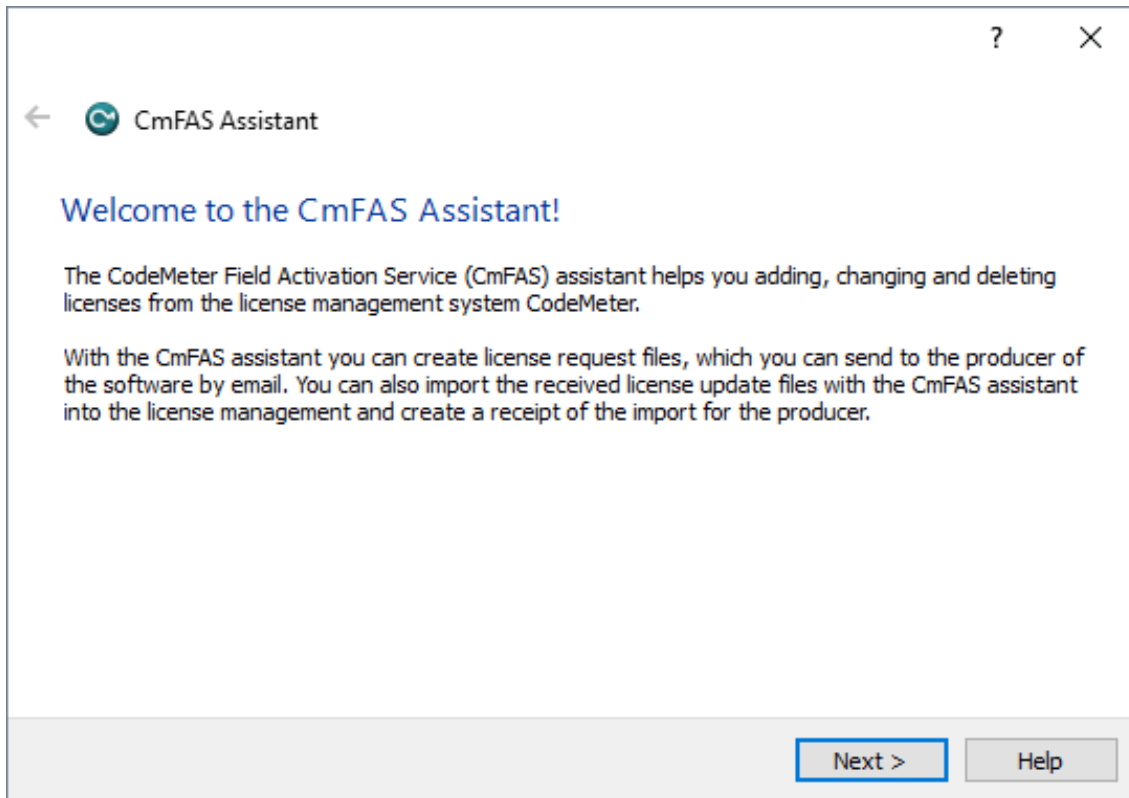
(If the procedure is not clear, you can have a look at this instructional video from Wibu Systems: [Create a Context File \(.WibuCmRac\)](#))

-----END-----

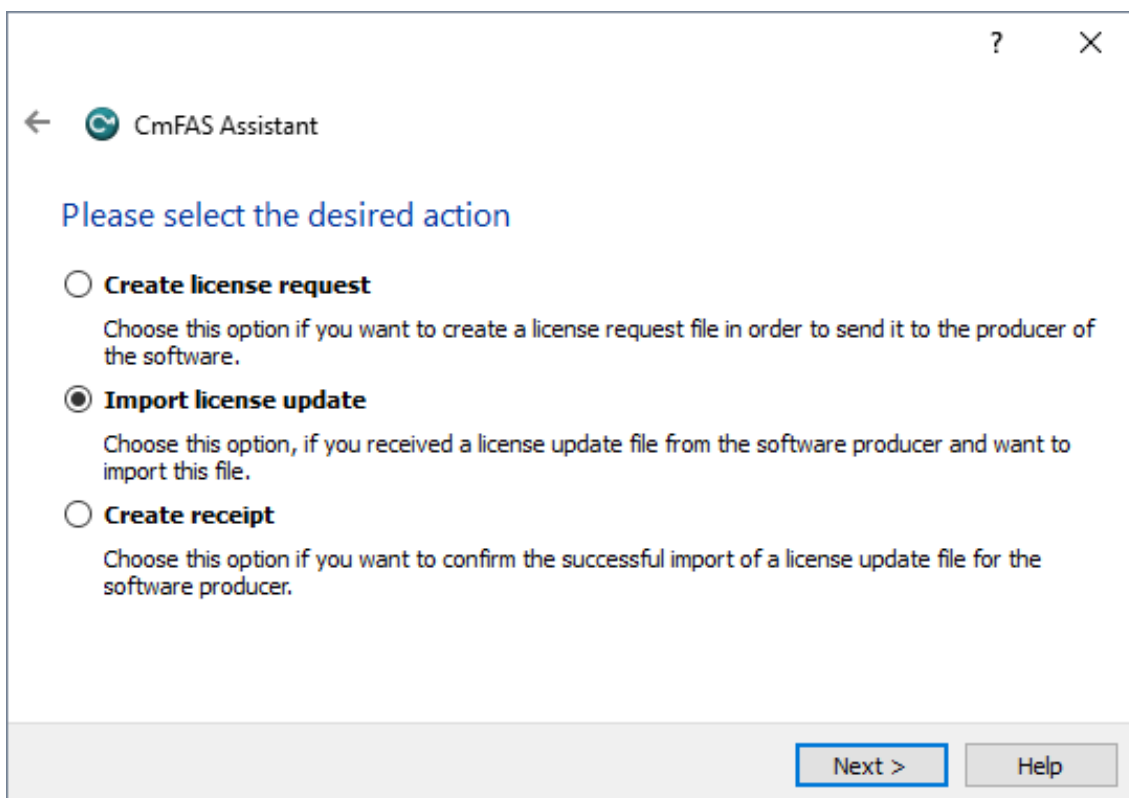
2B. Applying a License Update file (.WibuCmRaU)

After you have received a *License Update* file (WibuCmRaU) from us, you need to apply this *License Update* file to your key to actually update the license on the key.

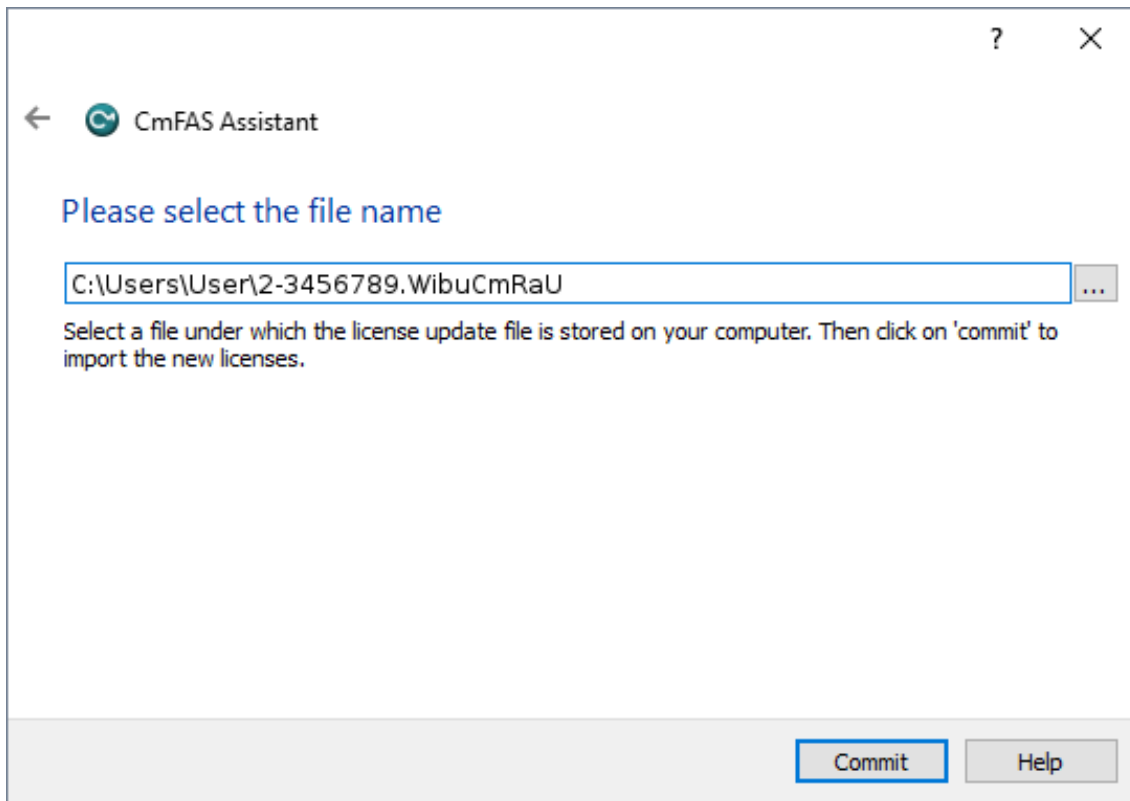
Click on the '**License Update**' button to start the license update process. This should start a wizard that will guide you through the process and should look something like the following images.



Click on **Next**.



Select '**Import license update**' and click on **Next**.



Select the *License Update* file (.WibuCmRaU) that you received and click on **Commit**.

This should apply the update and after the process completes, the key is updated.

(If you do get an error, please send an email to support@lighthouse.nl with the exact error message you get, and any additional information that you can give us like name, contract number and/or order number for easy reference.)

If the process was successful, the MSD license on the key is ready for use.

-----END-----